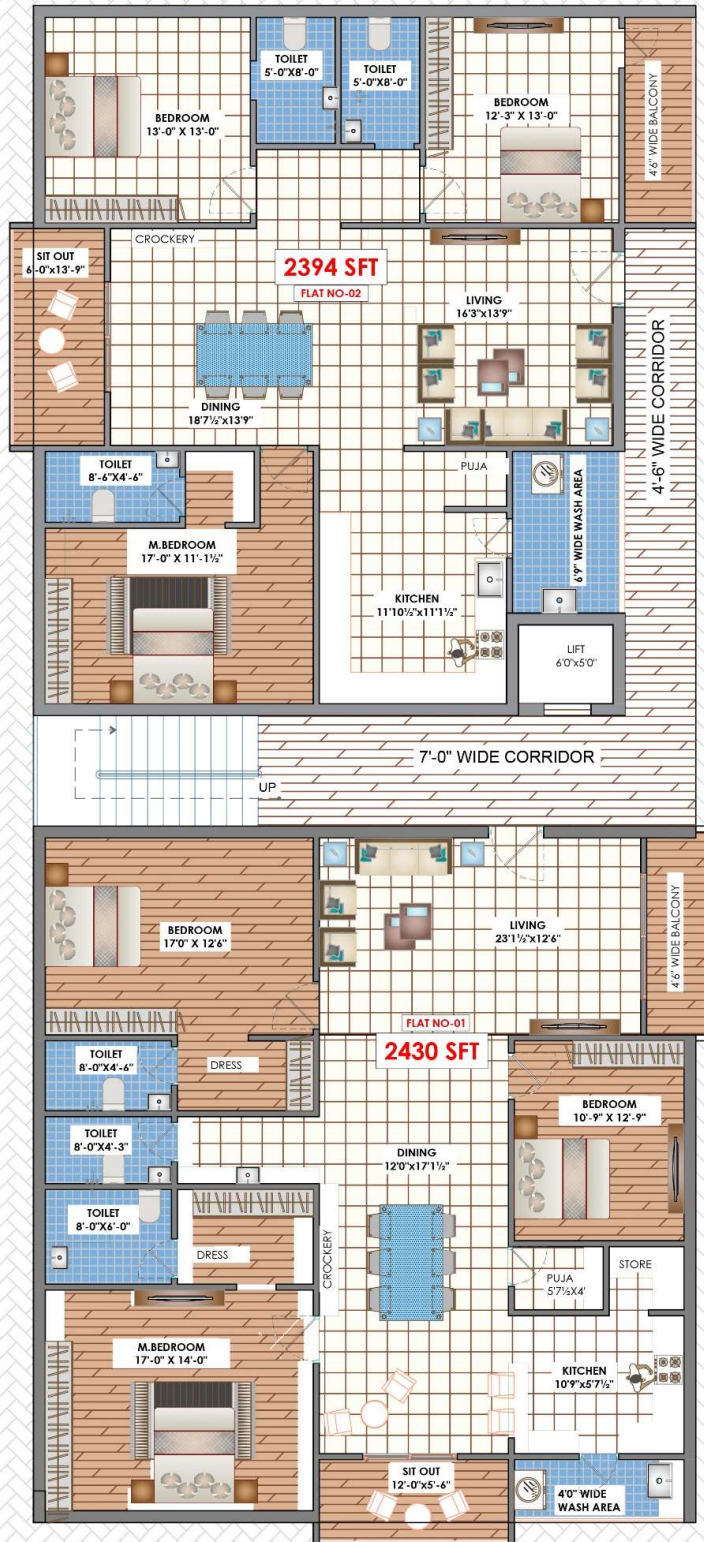


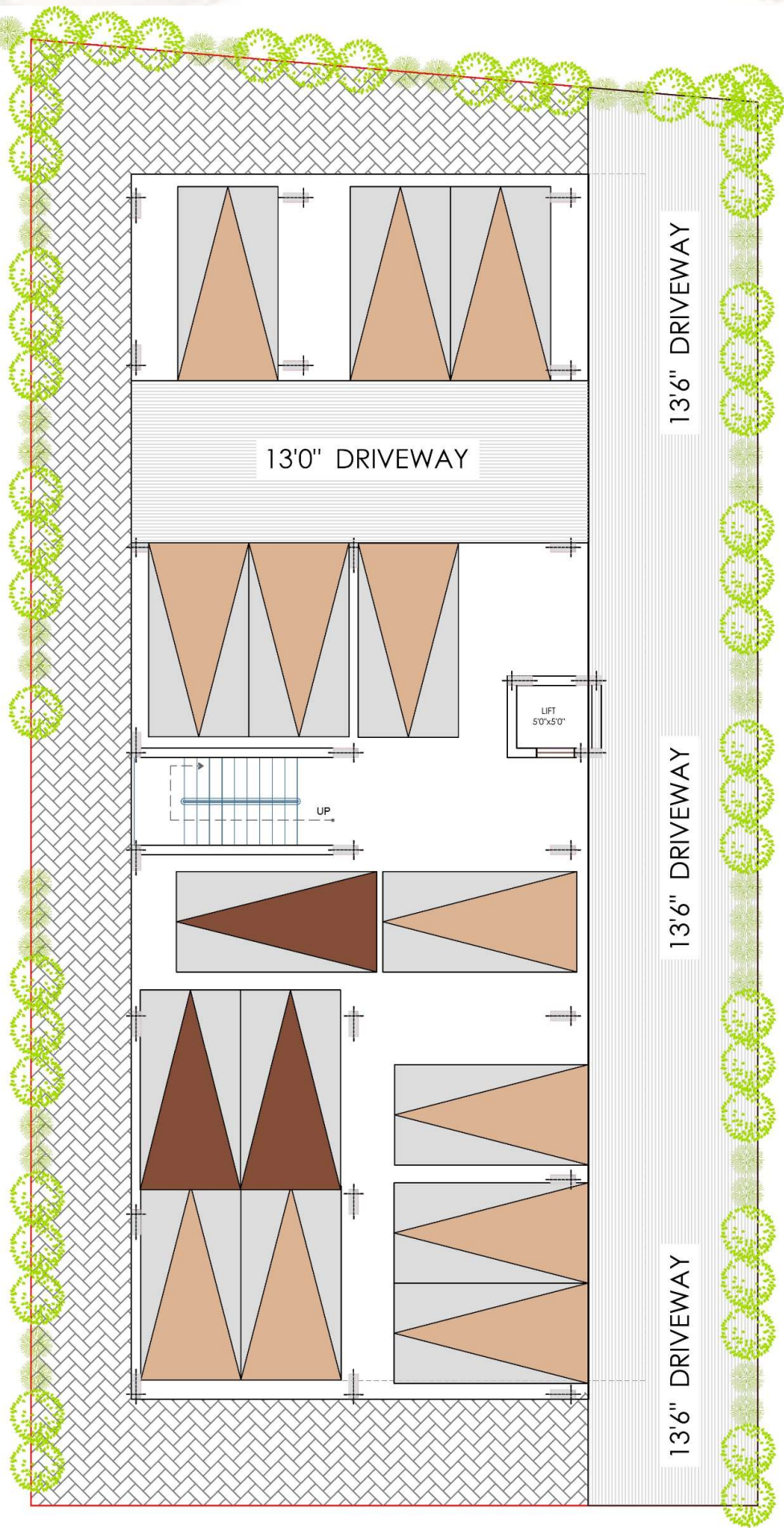


# SRI NILAYAM

 **SAANVI**  
**INFRA PROPERTIES**

# SITE PLAN



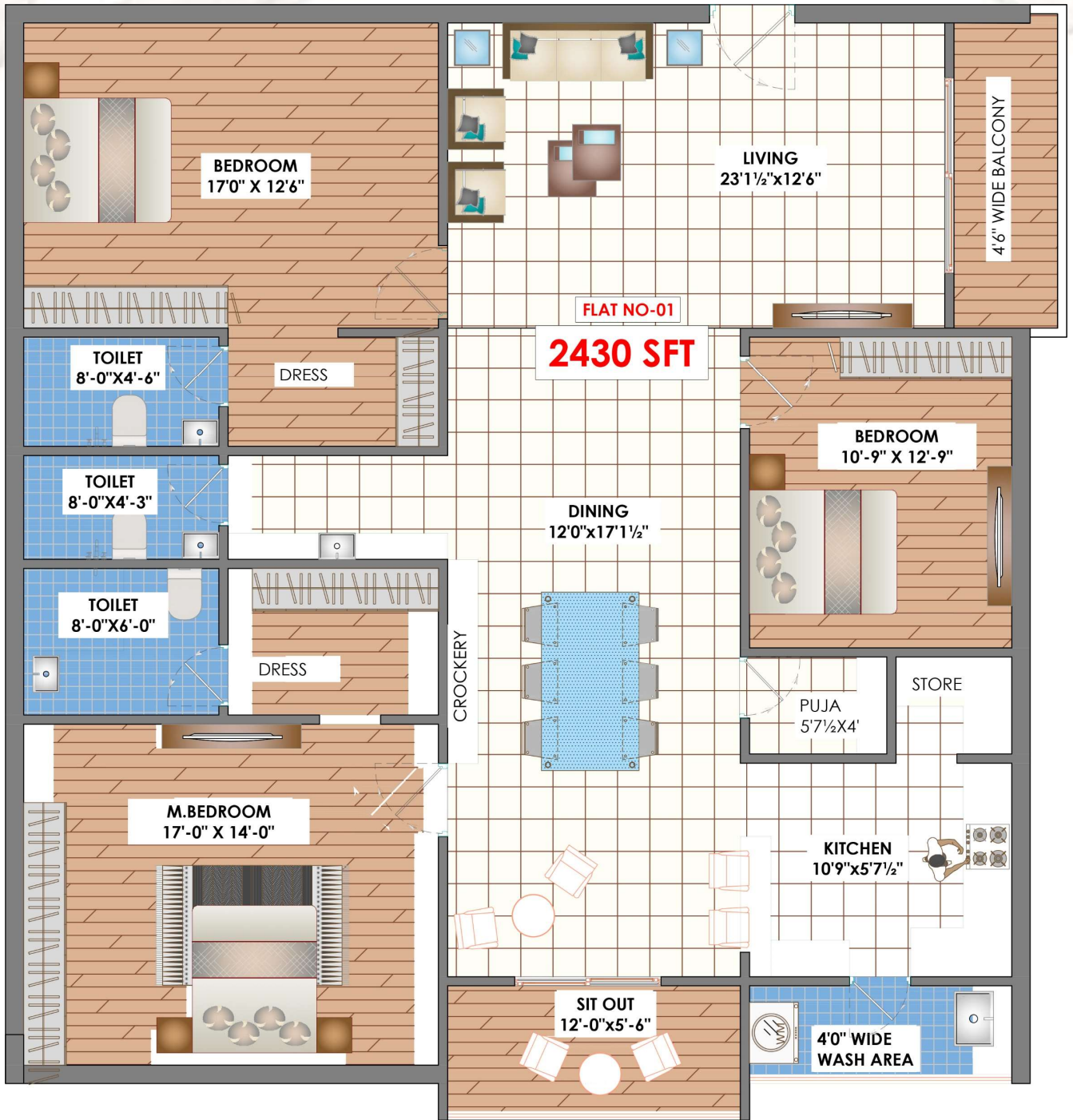


30' WIDE ROAD

# PARKING LAYOUT



# FLOOR PLANS



**NORTH FACING**



**NORTH FACING**



**EAST FACING**





**EAST FACING**



#### STRUCTURE

RCC-framed structure.

#### SUPER STRUCTURE

First class brick work in cement mortar.

#### TELECOM

- Intercom facility to all the flats connecting the security.
- Provision of Internet connection in master bedroom and drawing room.

#### GENERATOR

Power backup generator of Mahindra or equivalent make with backup for common areas, lift, 3 fans and 3 lights points in each flat.

#### PLASTERING

Plastering in two coats sponge finish.

#### DOORS

- Main Door: Best teak wood frame and shutter finished with Teak Ply / Teak Veneer, aesthetically designed with melamine polishing and designer hardware of reputed make.
- Internal Doors : Teak wood frame and designer skin molded doors with enamel paint with standard fittings.

#### WINDOWS

UPVC Windows of Aparna / Wintech or equivalent make.

## SPECIFICATIONS



#### BATHROOMS AND TOILETS

- CP fittings of SOMANY / JAQUAR / HINDWARE or equivalent make.
- EWC and flush tank of SOMANY / CERA / HINDWARE or equivalent make
- Hot and cold provisioned wall mixer with shower.
- Tiles up to 6.6' Height.
- Ceramic non slippery flooring of standard make.

#### LIFT

6 Passenger capacity lift of KONI or equivalent make with granite / vitrified tile cladding.

#### KITCHEN

Municipal and bore well water connection provision for Aqua guard.

#### HARVESTING PIT

Harvesting Pit will be provided.

#### WATER SUPPLY & SANITARY

ISI Mark CPVC piping executed by professional plumbers.

#### CCTV CAMERA PROVISION

CCTV cameras will be provided to enhance the security feature.

#### FLOORING

Vitrified tiles of size (800 X 800 min) of johnson / Varmora or Standard make.

#### UTILITIES

Provision for exhaust fan, chimney, washing machine.

#### SOLAR FENCING

Solar fencing will be provided across the building.

#### PAINTING

- Internal: Smooth luppam / putty finish with premium acrylic emulsion paints.
- External: Combination of Premium Texture/Cement based painting.

#### ELECTRICAL

- Concealed copper wiring in conduits for lights, fan, power plug points of Finolex / KEI or equivalent make.
- Power plug points for cooking range chimney, refrigerator, microwave, mixer grinder in kitchen.
- Power outlets for air-conditioners in all bedrooms.
- 3 phase supply for each unit with individual meter board.
- Power outlets for Geysers in all bathrooms.
- All Modular electrical fittings of Legrand or equivalent make.
- Plug points for TV. in drawing room and Master Bedroom.
- MCB for distribution board of Legrand or equivalent make.

#### NOTE

- Person desires to Alter / Modify their flat internally shall be done at extra cost only.
- Person desires to Alter / Modify their flat internally need to be informed before the brick work.
- Shelf's, Lofts, Chajja's and extra electrical points are optional with extra cost.
- GST and registration charges as applicable to be borne by the customers only as per the prevailing rates.

## AMENITIES & FEATURES

- Quality construction
- Excellent ventilation
- CC TV camera security
- No common walls
- Power back-up generator
- Prime location
- 100% vastu
- Rain water harvesting pits

# THANK YOU



**Address : Flat No.601, Lotus Homes,  
A-Block, Sector-1,  
Alkapuri Township, Neknampur (V)  
Hyderabad, Telangana-500089**

**Contact : +919000111485 / +919908480222**